

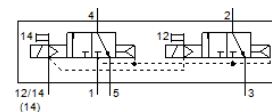
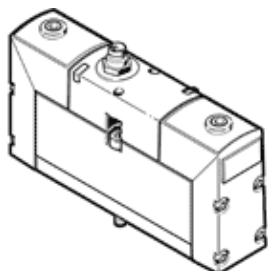
# solenoid valve

## VSVA-B-T32C-AZH-A1-1R5L

Part number: 534542

FESTO

with central plug, round design M12x1.



## Data sheet

| Feature                                     | Value   |
|---|---|
| Valve function                              | 2x3/2 closed, monostable  |
| Type of actuation                           | electrical  |
| Width                                       | 26 mm   |
| Operating pressure                          | 3 ... 10 bar  |
| Design structure                            | Piston slide  |
| Type of reset                               | Air spring  |
| Authorisation                               | C-Tick<br>c CSA us (OL)<br>c UL us - Recognized (OL)                        |
| CE mark (see declaration of conformity)     | to EU directive for EMC   |
| Protection class                            | IP65<br>NEMA 4  |
| Nominal size                                | 9 mm  |
| Grid dimension                              | 27 mm   |
| Exhaust-air function                        | throttleable<br>Via throttle plate<br>Via individual sub-base               |
| Sealing principle                           | soft  |
| Assembly position                           | Any   |
| Conforms to standard                        | ISO 15407-1   |
| Manual override                             | Pushing   |
| Type of piloting                            | Piloted   |
| Pilot air supply                            | external  |
| Flow direction                              | non reversible  |
| Overlap                                     | Positive overlap  |
| Signal status display                       | LED   |
| Pilot pressure                              | 3 ... 8 bar   |
| b value                                     | 0.25  |
| C value                                     | 4 l/sbar  |
| Flow rate of valve                          | 1,250 l/min   |
| Flow rate of valve on individual sub-base   | 1,000 l/min   |
| Flow rate of pneumatically linked valve     | 900 l/min   |
| Switching time off                          | 33 ms   |
| Switching time on                           | 20 ms   |
| Duty cycle                                  | 100 %   |
| Max. positive test pulse with logic 0       | 500 µs  |
| Max. negative test pulse with logic 1       | 500 µs  |
| Nominal breakaway current per solenoid coil | 110 mA up to 20 ms  |
| Nominal current with current reduction      | 30 mA after 20 ms   |
| Characteristic coil data                    | 24 V DC: low-current phase 1 W, high-current phase 2.4 W                    |
| Permissible voltage fluctuation             | +/- 10 %  |
| Operating medium                            | Compressed air in accordance with ISO8573-1:2010 [7:4:4]                    |
| Note on operating and pilot medium          | Lubricated operation possible (subsequently required for further operation) |

| <b>Feature</b>                          | <b>Value</b>   |
|---|--|
| Vibration resistance                    | Transport application test at severity level 2 in accordance with FN 942017-4 and EN 60068-2-6 |
| Shock resistance                        | Shock test with severity level 2 in accordance with FN 942017-5 and EN 60068-2-27              |
| Corrosion resistance classification CRC | 2 - Moderate corrosion stress  |
| Medium temperature                      | -5 ... 50 °C   |
| Relative air humidity                   | 0 - 90 %   |
| Pilot medium                            | Compressed air in accordance with ISO8573-1:2010 [7:4:4]                                       |
| Ambient temperature                     | -5 ... 50 °C   |
| Max. tightening torque, valve mounting  | 1.8 ... 2.2 Nm   |
| Product weight                          | 270 g  |
| Electrical connection                   | Central plug<br>Round design<br>M12x1<br>3-pin   |
| Mounting type                           | On sub-base<br>With through-hole and screw   |
| Auxiliary pilot air port 12/14          | Connection plate size 26 mm, according to ISO 15407-1  |
| Pilot exhaust port 82/84                | Optional<br>Not ducted as per standard<br>Ducted   |
| Materials note                          | Conforms to RoHS   |
| Material seals                          | FPM<br>HNBR<br>NBR   |
| Material housing                        | Aluminium die cast   |